

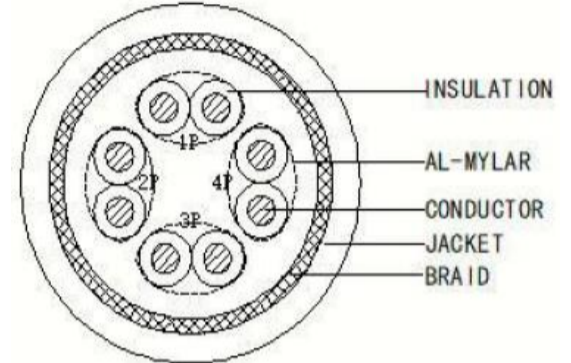
S/FTP 4Pairs 23AWG cable-category CAT.7 PVC Sheath CPR



Construction

Conductor	BC 1/0.58mm Solid Copper Wire
Insulation	Foam PE 1,38mm
Insulation colors	Pair 1: White, Blue Pair 2: White, Orange Pair 3: White, Green Pair 4: White, Brown
Shield Pairs	Al-Myler Tape
Shield Global	TC Braid 16/5/0.10mm
Shield Coverage	100%
Jacket	PVC (100P) 7.60mm
Jacket thickness	0.65 mm
Jacket color	Black RAL 9004

Cross Section



Packaging

Packaging	305m Wooden Reel (380x145x300mm) and 1000m Wooden Reel (570x230x425mm)
Cable Marking	Q16-7018 EMELEC VIASCOM 4P 23AWG S/FTP CAT7 PVC Gigacom 1000BaseT ISO/IEC 11801 TIA/EIA 568B & RoHS Fire Class Fca 001M.....xxxM (nnnn)

Electrical Characteristics (20°C)

Conductor DC Resist.	≤ 95.0 Ω/Km							
DC Resist. Unbalanced	Internal pair: ≤ 2% // Between pairs: ≤ 4%							
Charact. Impedance	100±15 Ω							
Insulation Resistance	≥ 5000 MΩ km							
Capacitance Unbalanced	≤ 160 pF/100m							
Transmission perform.	IEC 61156-5							
	MHZ	RL ≥dB	ATT ≤dB	NEXT ≥dB	ACRF ≥dB	PS NEXT dB	PS ACRF dB	Delay ns
	4.00	23.0	3.7	78.0	78.0	75.0	75.0	552
	8.00	24.5	5.2	78.0	77.2	75.0	74.2	547
	10.0	25.0	5.9	78.0	75.3	75.0	72.3	545
	16.00	25.0	7.4	78.0	71.2	75.0	68.2	543
	20.00	25.0	8.3	78.0	69.3	75.0	66.3	542
	25.00	24.3	9.3	78.0	67.3	75.0	64.3	541
	31.25	23.6	10.4	78.0	65.4	75.0	62.4	540
	62.50	21.5	14.9	75.5	59.4	75.0	56.4	539
	100.00	20.1	19.0	72.4	55.3	72.5	52.3	538
	200.00	18.0	27.5	67.9	49.3	69.4	46.3	537
	250.00	17.3	31.0	66.4	47.3	64.9	44.3	536
	300.00	17.3	34.2	65.2	45.8	62.2	42.8	536
	400.00	17.3	40.0	63.4	43.3	60.4	40.3	536
	500.00	17.3	45.3	61.9	41.3	58.9	38.3	536
	600.00	17.3	50.1	60.7	39.7	57.7	36.7	535

Other Characteristics

Operating Temperature	-20°C to 75°C
Min. Bending Radius	Fixed: 8D (Cable diameter)
Flame Resistance	IEC 60332-1-2
CPR	Fca

COPIA NO CONTROLADA



Cable ID: Q16-7018

Test Limit: TIA Cat 6A Perm. Link (+All)

Limits Version: V7.8

Date / Time: 12/13/2023 05:38:03 PM

Operator: ZJ

Headroom 6.5 dB (NEXT 3,6-4,5)

Cable Type: Cat 6A S/FTP

NVP: 77.0%

Main: Versiv

S/N: 2024016

Software Version: V6.9 Build 2

Calibration Date: 07/31/2020

Adapter: DSX-8000 (DSX-PLA804)

S/N: 22270415

Remote: Versiv

S/N: 2027057

Software Version: V6.9 Build 2

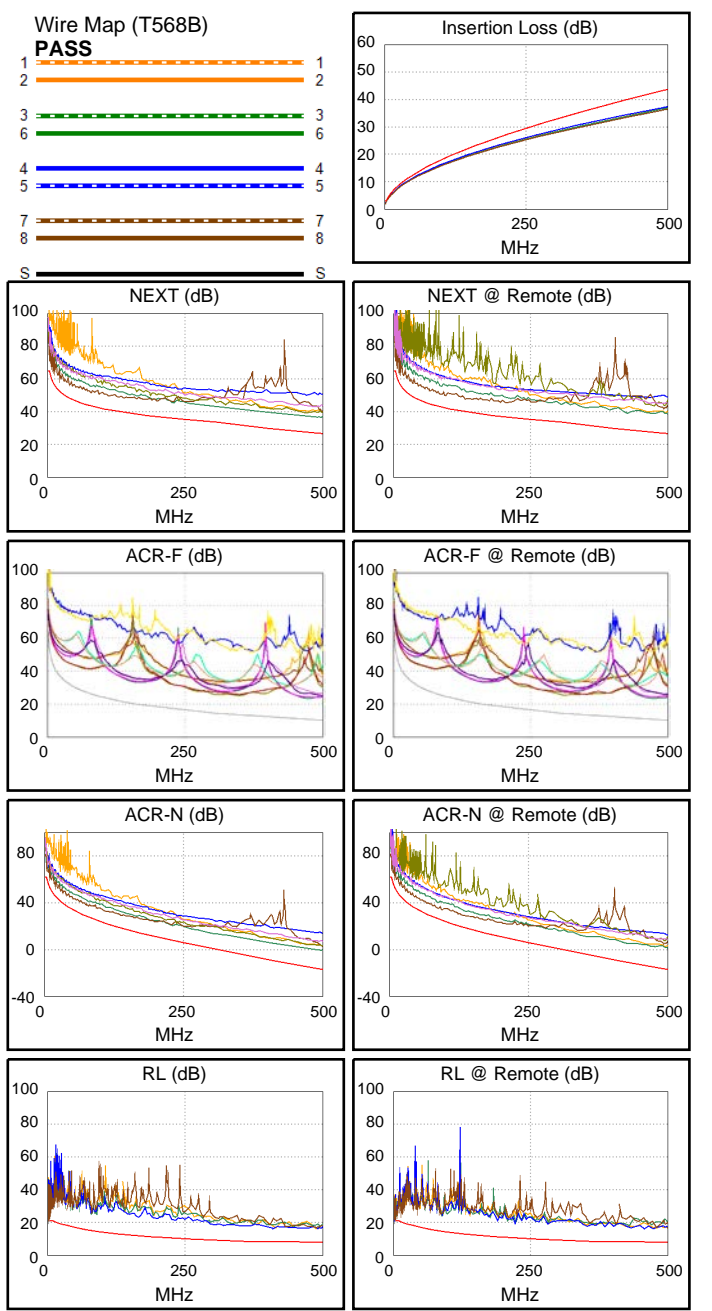
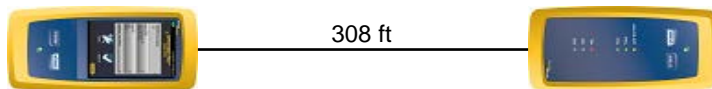
Calibration Date: 07/31/2020

Adapter: DSX-8000R (DSX-PLA804)

S/N: 22270413

Test Summary: PASS

Length (ft), Limit 295	[Pair 7,8]	308
Prop. Delay (ns), Limit 498	[Pair 4,5]	416
Delay Skew (ns), Limit 44	[Pair 4,5]	9
Resistance (ohms), Limit 21.00	[Pair 3,6]	12.83
Resist. Unbal. (ohms), Limit 0.380	[Pair 3,6]	0.038
Resist. P2P Unbal. (ohms), Limit 0.440	[Pair 3,6-7,8]	0.063
Insertion Loss Margin (dB)	[Pair 4,5]	6.4
Frequency (MHz)	[Pair 4,5]	500.0
Limit (dB)	[Pair 4,5]	43.8



Worst Case Margin Worst Case Value

PASS	MAIN	SR	MAIN	SR
Worst Pair	3,6-4,5	3,6-4,5	1,2-4,5	1,2-4,5
NEXT (dB)	7.9	6.5	9.9	12.0
Freq. (MHz)	32.8	93.8	497.0	500.0
Limit (dB)	49.7	42.3	26.7	26.7
Worst Pair	4,5	4,5	4,5	1,2
PS NEXT (dB)	8.6	8.1	10.9	12.3
Freq. (MHz)	79.3	93.8	499.0	497.0
Limit (dB)	41.0	39.8	23.8	23.8

PASS	MAIN	SR	MAIN	SR
Worst Pair	3,6-4,5	3,6-4,5	1,2-4,5	1,2-4,5
ACR-F (dB)	11.1	11.2	12.9	13.1
Freq. (MHz)	310.0	313.0	478.0	489.0
Limit (dB)	14.4	14.3	10.6	10.4
Worst Pair	4,5	4,5	4,5	4,5
PS ACR-F (dB)	11.8	11.7	12.7	12.3
Freq. (MHz)	310.0	317.0	346.0	337.0
Limit (dB)	11.4	11.2	10.4	10.6

N/A	MAIN	SR	MAIN	SR
Worst Pair	3,6-4,5	3,6-4,5	1,2-4,5	1,2-4,5
ACR-N (dB)	8.8	8.2	16.3	18.4
Freq. (MHz)	32.8	94.0	498.0	500.0
Limit (dB)	39.6	24.9	-16.9	-17.1
Worst Pair	4,5	4,5	4,5	1,2
PS ACR-N (dB)	9.5	9.7	17.4	19.3
Freq. (MHz)	41.3	15.6	500.0	500.0
Limit (dB)	34.3	45.5	-20.0	-20.0

PASS	MAIN	SR	MAIN	SR
Worst Pair	7,8	7,8	4,5	4,5
RL (dB)	4.7	3.1	7.9	7.6
Freq. (MHz)	4.0	4.0	446.0	459.0
Limit (dB)	21.0	21.0	8.0	8.0

Compliant Network Standards:

10BASE-T	100BASE-TX	100BASE-T4
1000BASE-T	2.5GBASE-T	5GBASE-T
10GBASE-T	ATM-25	ATM-51
ATM-155	100VG-AnyLan	TR-4
TR-16 Active	TR-16 Passive	



Cable ID: Q16-7018

Test Limit: TIA Cat 6A Perm. Link (+All)

Limits Version: V7.8

Date / Time: 12/13/2023 05:38:03 PM

Operator: ZJ

Headroom 6.5 dB (NEXT 3,6-4,5)

Cable Type: Cat 6A S/FTP

NVP: 77.0%

Main: Versiv

S/N: 2024016

Software Version: V6.9 Build 2

Calibration Date: 07/31/2020

Adapter: DSX-8000 (DSX-PLA804)

S/N: 22270415

Test Summary: PASS

Remote: Versiv

S/N: 2027057

Software Version: V6.9 Build 2

Calibration Date: 07/31/2020

Adapter: DSX-8000R (DSX-PLA804)

S/N: 22270413

	Worst Case Margin		Worst Case Value	
	MAIN	SR	MAIN	SR
PASS				
Worst Pair	3,6	1,2	3,6	3,6
TCL (dB)	9.6	8.6	12.3	14.7
Freq. (MHz)	93.0	1.0	461.0	498.0
Limit (dB)	20.5	40.0	10.0	9.5
N/A				
Worst Pair			7,8-3,6	7,8-3,6
CDNEXT (dB)			18.7	19.1
Freq. (MHz)			495.0	485.0
Limit (dB)				
N/A				
Worst Pair			3,6	3,6
CMRL (dB)			8.2	8.5
Freq. (MHz)			471.0	478.0
Limit (dB)				
PASS				
Worst Pair	4,5	4,5	4,5	4,5
ELTCTL (dB)	20.0	20.2	23.9	23.2
Freq. (MHz)	9.3	7.9	23.1	20.6
Limit (dB)	10.7	12.1	2.7	3.7

